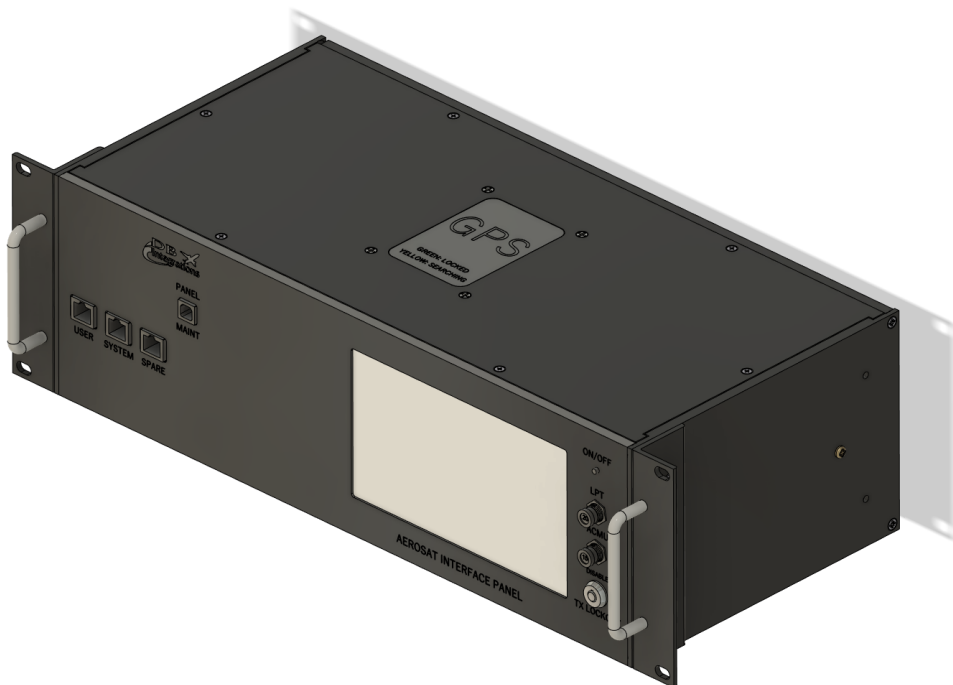




AEROSAT MAINTENANCE INTERFACE PANEL

QUICK REFERENCE GUIDE
(version 1.0)



Maintenance Panel Overview:

The Aerosat Maintenance Interface Panel (MIP) is a rack mounted unit with the ability to break out every interface available on the Astronics T-series Ku systems. The unit fits into a standard 19” rack with a 3RU height. It gets powered by a built-in 24VDC power supply capable of driving 5 amps.

Equipment Part Numbers:

Description	Part Number
Aerosat MIP	DB10-1340-01

Incorporated Features:

Option	Included
ARINC 429 transmit	2 paralleled channels
Internal GPS	Yes
Internal compass	Yes
CEPT ports	0
ISDN ports	0
FX ports	0
Ethernet ports	USER, SYSTEM, SPARE
USB pass-through ports	0
Console RS232 ports	0
Keyed TX disable	Yes
Front I/O connector	No
External LRU power input	Yes

User Interface Firmware:

The Maintenance Interface Panel runs using our proprietary firmware package named *Obsidian*. Consult the *Obsidian* user’s manual for specific information on using this panel’s touchscreen interface.

Default Power Button Configuration:

Power Button Name:	Function:
LPT/BDC	External power to J3 - pin 37 External power to J3 - pin 45 External power to J3 - pin 46 External power to J3 - pin 53 External power to J101 - pin 28 External power to J101 - pin 31
ACMU	External power to J4 - pin 4 External power to J4 - pin 5

Default Discrete Out Button Configuration:

Discrete Out Number:	Pin:	Name:	Function:	Icon Image	Icon State
1	J3 - pin 22	TV/DATA	“TV & DATA” = Grounded “DATA ONLY” = Open	X	X
2	J3 - pin 14	FLAPS 0	“FLAPS 0” = Grounded “OPEN” = Open	X	X
3	J3 - pin 7	FLAPS 10	“FLAPS 10” = Grounded “OPEN” = Open	X	X
4	J3 - pin 2	FLAPS 20	“FLAPS 20” = Grounded “OPEN” = Open	X	X
5	J3 - pin 8	FLAPS 39	“FLAPS 39” = Grounded “OPEN” = Open	X	X
6	J3 - pin 24	DOOR OPEN	“DOOR OPEN” = Grounded “DOOR CLOSED” = Open	X	X
7	J3 - pin 4	W.O.W.	“ON GROUND” = Grounded “IN AIR” = Open	WOW	Low
8	J3 - pin 9	CWAP	“ENABLED” = Grounded “DISABLED” = Open	WiFi	Low

Default Discrete In Button Configuration:

Discrete In Number:	Pin:	Name:	Function:	Icon Image	Icon State
13	J1 - pin 12	TX MUTE	“TX ENABLED” = Grounded “TX MUTED” = Open	Mute	High
1	J1 - pin 10	STATUS	“SAT COMM” = Grounded “NO NETWORK” = Open	Data	Low

TX Lockout Keyswitch:

The TX LOCKOUT keyswitch will break the connection between the ACMU and LPT/BDC to disable transmissions. There is an icon on the homescreen that indicates when the system is able to transmit.

Panel Pinout Overview:

The next sections show all of the pinouts for the Maintenance Interface Panel. Items highlighted in yellow indicate a direct pass-through to the J101 connector. The pin designations are configurable through a loadable file; therefore, the pins may be used for any actual signals as desired. The ones listed here are suggested or named by default. Each signal must be below a maximum of 1 ampere each.

Panel J1 Connector Pinouts:

J1, 57 pin female CPC TE Connectivity, P/N: 1-796329-1 Mates With: TE Connectivity, P/N: 206437-1 Pin P/N: M39029/64-369 pins Backshell: TE Connectivity, P/N: 182930-1			
Pin 1	No Connection	Pin 21	No Connection
Pin 2	No Connection	Pin 22	No Connection
Pin 3	No Connection	Pin 23	Ground
Pin 4	No Connection	Pin 24	No Connection
Pin 5	No Connection	Pin 25	No Connection
Pin 6	No Connection	Pin 26	No Connection
Pin 7	No Connection	Pin 27	No Connection
Pin 8	No Connection	Pin 28	No Connection
Pin 9	No Connection	Pin 29	No Connection
Pin 10	Status (from ACMU)	Pin 30	Ground
Pin 11	TX mute (to LPT/BDC)	Pin 31	Ground
Pin 12	TX mute (from ACMU)	Pin 32	No Connection
Pin 13	No Connection	Pin 33	No Connection
Pin 14	No Connection	Pin 34	No Connection
Pin 15	No Connection	Pin 35	No Connection
Pin 16	No Connection	Pin 36	No Connection
Pin 17	No Connection	Pin 37	No Connection
Pin 18	No Connection	Pin 38	No Connection
Pin 19	No Connection	Pin 39	No Connection
Pin 20	No Connection	Pin 40	No Connection

J1, 57 pin female CPC TE Connectivity, P/N: 1-796329-1			
Mates With: TE Connectivity, P/N: 206437-1 Pin P/N: M39029/64-369 pins			
Backshell: TE Connectivity, P/N: 182930-1			
Pin 41	No Connection	Pin 49	No Connection
Pin 42	No Connection	Pin 50	No Connection
Pin 43	No Connection	Pin 51	No Connection
Pin 44	No Connection	Pin 52	No Connection
Pin 45	No Connection	Pin 53	No Connection
Pin 46	No Connection	Pin 54	No Connection
Pin 47	No Connection	Pin 55	No Connection
Pin 48	No Connection	Pin 56	No Connection
		Pin 57	No Connection

Panel J3 Connector Pinouts:

J3, 63 pin male CPC TE Connectivity, P/N: 206455-2			
Mates With: TE Connectivity, P/N: 205842-1 Pin P/N: M39029/63-368 pins			
Backshell: TE Connectivity, P/N: 182930-1			
Pin 1	No Connection	Pin 12	ARINC 429 Rx - 1A (from ACMU)
Pin 2	Discrete 4 Switched Lo (to ACMU)	Pin 13	Ground
Pin 3	No Connection	Pin 14	Discrete 2 Switched Lo (to ACMU)
Pin 4	Discrete 7 Switched Lo (to ACMU)	Pin 15	No Connection
Pin 5	No Connection	Pin 16	No Connection
Pin 6	No Connection	Pin 17	No Connection
Pin 7	Discrete 3 Switched Lo (to ACMU)	Pin 18	ARINC 429 Tx - 2A (to ACMU)
Pin 8	Discrete 5 Switched Lo (to ACMU)	Pin 19	ARINC 429 Tx - 2B (to ACMU)
Pin 9	Discrete 8 Switched Lo (to ACMU)	Pin 20	ARINC 429 Rx - 1B (from ACMU)
Pin 10	ARINC 429 Tx - 1A (to ACMU)	Pin 21	Ground
Pin 11	ARINC 429 Tx - 1B (to ACMU)	Pin 22	Discrete 1 Switched Lo (to ACMU)

J3, 63 pin male CPC
TE Connectivity, P/N: 206455-2

Mates With:
TE Connectivity, P/N: 205842-1
Pin P/N: M39029/63-368 pins

Backshell:
TE Connectivity, P/N: 182930-1

Pin 23	Ground	Pin 44	No Connection
Pin 24	No Connection	Pin 45	Switched Power (LPT/BDC)
Pin 25	No Connection	Pin 46	Switched Power (LPT/BDC)
Pin 26	No Connection	Pin 47	Ground
Pin 27	No Connection	Pin 48	No Connection
Pin 28	Ground	Pin 49	No Connection
Pin 29	Ground	Pin 50	Ground
Pin 30	Ground	Pin 51	No Connection
Pin 31	Ground	Pin 52	No Connection
Pin 32	Ground	Pin 53	Switched Power (LPT/BDC)
Pin 33	Ground	Pin 54	No Connection
Pin 34	Ground	Pin 55	No Connection
Pin 35	No Connection	Pin 56	No Connection
Pin 36	No Connection	Pin 57	No Connection
Pin 37	Switched Power (LPT/BDC)	Pin 58	No Connection
Pin 38	Ground	Pin 59	No Connection
Pin 39	Ground	Pin 60	No Connection
Pin 40	Ground	Pin 61	No Connection
Pin 41	Ground	Pin 62	No Connection
Pin 42	Ground	Pin 63	No Connection
Pin 43	Ground		

Panel J4 Connector Pinouts:

<p>J4, 9 pin male CPC TE Connectivity, P/N: 206486-1</p> <p>Mates With: TE Connectivity, P/N: 206485-1 Pin P/N: M39029/63-368 pins</p> <p>Backshell: TE Connectivity, P/N: 1-206062-6</p>			
Pin 1	No Connection	Pin 5	Switched Power (ACMU)
Pin 2	No Connection	Pin 6	Ground
Pin 3	Ground	Pin 7	No Connection
Pin 4	Switched Power (ACMU)	Pin 8	No Connection
		Pin 9	Ground

Contact Us:

Please feel free to contact us if you need any additional help with the operation of this device.

DB Integrations, LLC
3405 Airport Road
Allentown, PA 18109

Phone: (610) 443-0201
Fax: (732) 486-0211

Email: support@dbiaero.com
Web: www.dbiaero.com