

DB01-402-01 SPECIFICATIONS

MATERIAL:

TRAY: 0.063" ALCLAD 2024-T3 MEETING AMS-QQ-A-250/5

PLENUM: 1" 6061-T6511 MEETING AMS-QQ-A-200/8

FINISH:

CONVERSION COATING PER MIL-DTL-81706

DESIGN:

4MCU DIMENSIONS PER ARINC 600

FAN INCLUDED, SEE BELOW

SILICONE GASKET INCLUDED

SOLID RIVETED CONSTRUCTION

SINGLE PIECE MILLED ALUMINUM PLENUM

MOUNTING HOLES NOT DRILLED

LOCKING LRU HOLD-DOWN PER M85731

WEIGHT: 3.2 POUNDS

ENVIRONMENTAL:

ALTITUDE PER DO-160, SECTION 4, CATEGORY F2 (55,000 FEET)

TEMPERATURE PER DO-160, SECTION 5, CATEGORY A (-55° C TO +85° C)

HUMIDITY PER DO-160, SECTION 6, CATEGORY C

OPERATIONAL SHOCK AND CRASH SAFETY PER DO-160, SECTION 7, CATEGORY A AND B (20G)
(HELICOPTER AND FIXED WING)

STATIC LOAD PER PART 25 AND 29 CATEGORIES, 10.0KG LRU

VIBRATION PER DO-160, SECTION 8, CATEGORY R, CURVE C1

VIBRATION PER DO-160, SECTION 8, CATEGORY S, CURVE B3

VIBRATION PER DO-160, SECTION 8, CATEGORY U2, CURVES F AND F1

FLUIDS SUSCEPTIBILITY TESTED PER DO-160, SECTION 11, CATEGORY F
SKYDROL, CALLA 800, SAE AMS1424 TYPE 1, SAE AMS 1435C,
CALLINGTON HAVEN 1-SHOT, HALON 1211

SAND AND DUST PER DO-160, SECTION 12, CATEGORY D (DUST)

SALT SPRAY PER DO-160, SECTION 14, CATEGORY S

FUNGUS PER DO-160, SECTION 13, CATEGORY F

ICING PER DO-160, SECTION 24, CATEGORY C (.5" HARD ICE)

FIRE AND FLAMMABILITY PER DO-160, SECTION 26, CATEGORY C

SUPPORT:

3D MODELING AVAILABLE

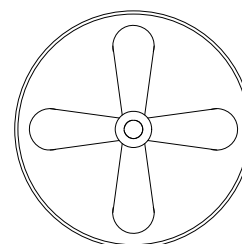
FAN INFORMATION:

P/N: 011372000

FAN SPECIFICATIONS: 55CFM, 28VDC, 1.5 NOMINAL AMPS
FAN INTERFACE: BUILT-IN +12" M22759 LEADS

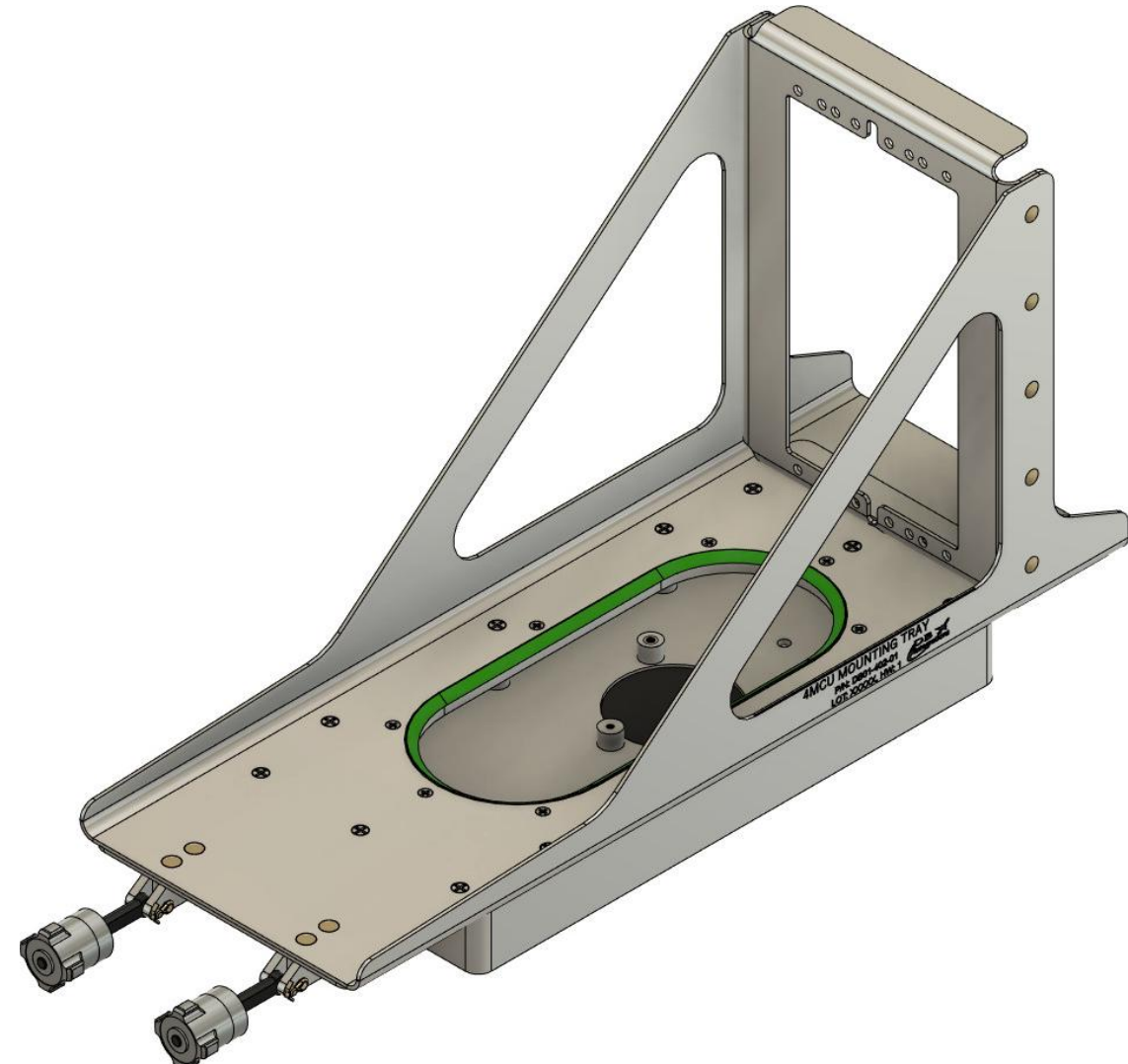
P/N: 00001109

FAN SPECIFICATIONS: 53CFM, 28VDC, 1.55 NOMINAL AMPS
FAN INTERFACE: BUILT-IN +12" NF C 93-523 LEADS





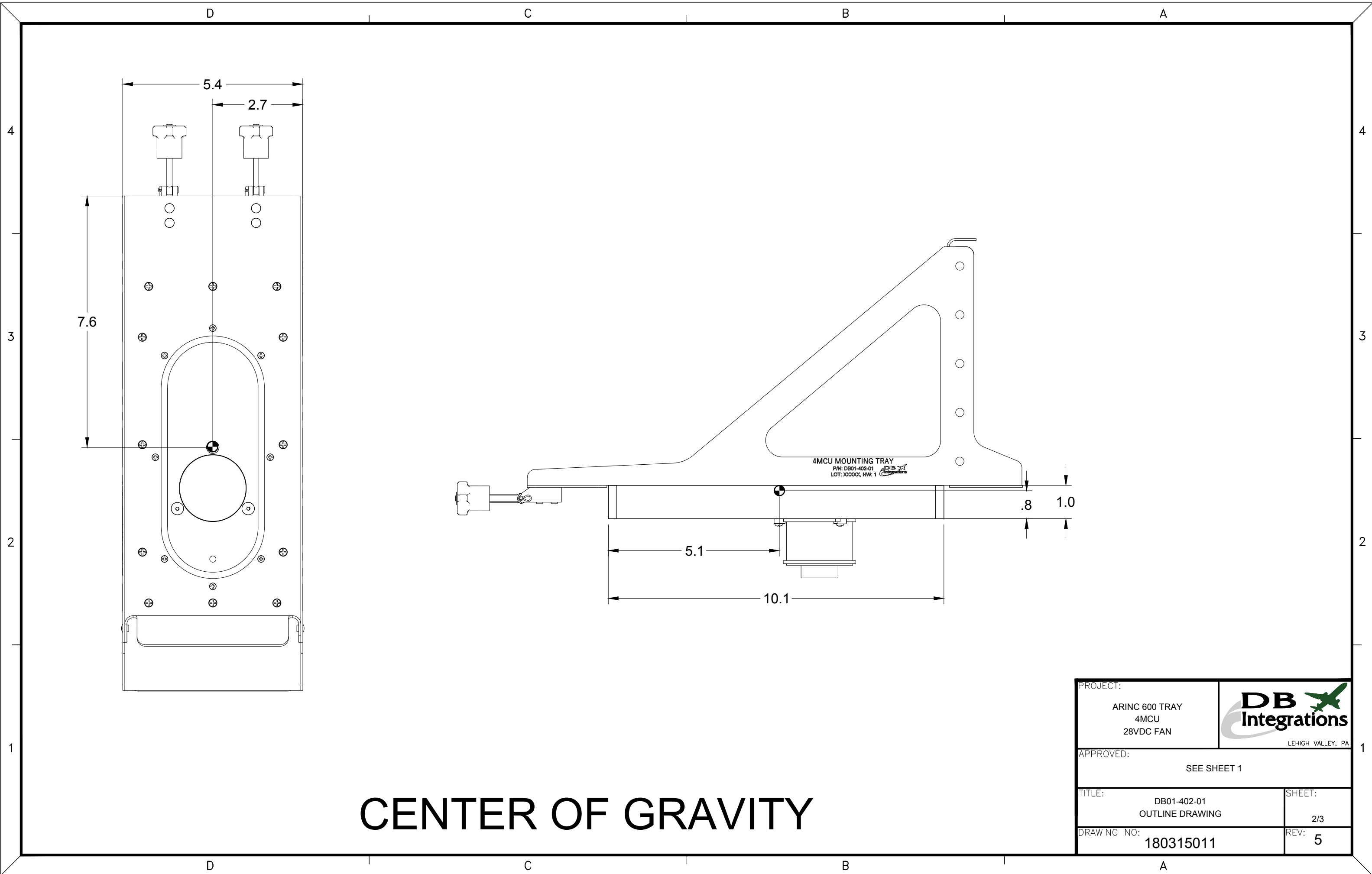
BROWN ———— FPS SIGNAL
BLACK ———— 28VDC RETURN
RED ———— 28VDC POWER

REV	REVISION DESCRIPTION	DATE	BY
0	INITIAL RELEASE, HARDWARE VERSION 0	07/03/18	BGG
1	ADDED SECONDARY FAN OPTION, BECOMES HARDWARE VERSION 1	03/28/19	BGG
2	CHANGES PER ECR_191025001_V6, REMAINS HARDWARE VERSION 1	05/25/22	BSJ
3	CHANGES PER ECR_180315002_V6, BECOMES HARDWARE VERSION 2	07/06/22	BSJ
4	CHANGES PER ECR_180315011_V3, BECOMES HARDWARE VERSION 2	02/01/24	ESC
5	CHANGES PER ECR_180315011_V4, REMAINS HARDWARE VERSION 2	04/25/24	NJS




TOLERANCES: X = ± 1.000
 .X = ± 0.100
 .XX = ± 0.030
 .XXX = ± 0.010
 ANGLES = ± 2.000
 FRACTION = ± 1/32

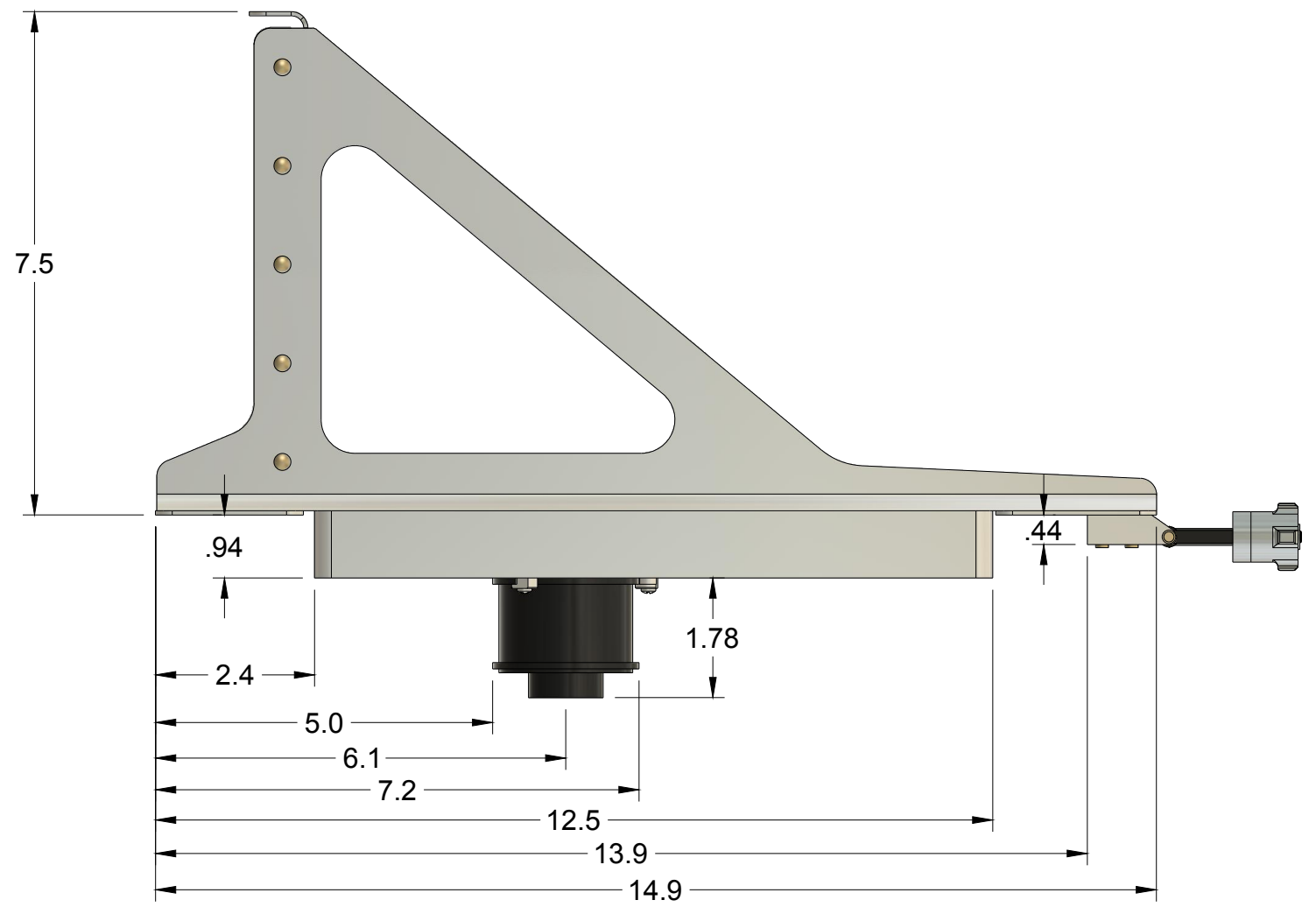
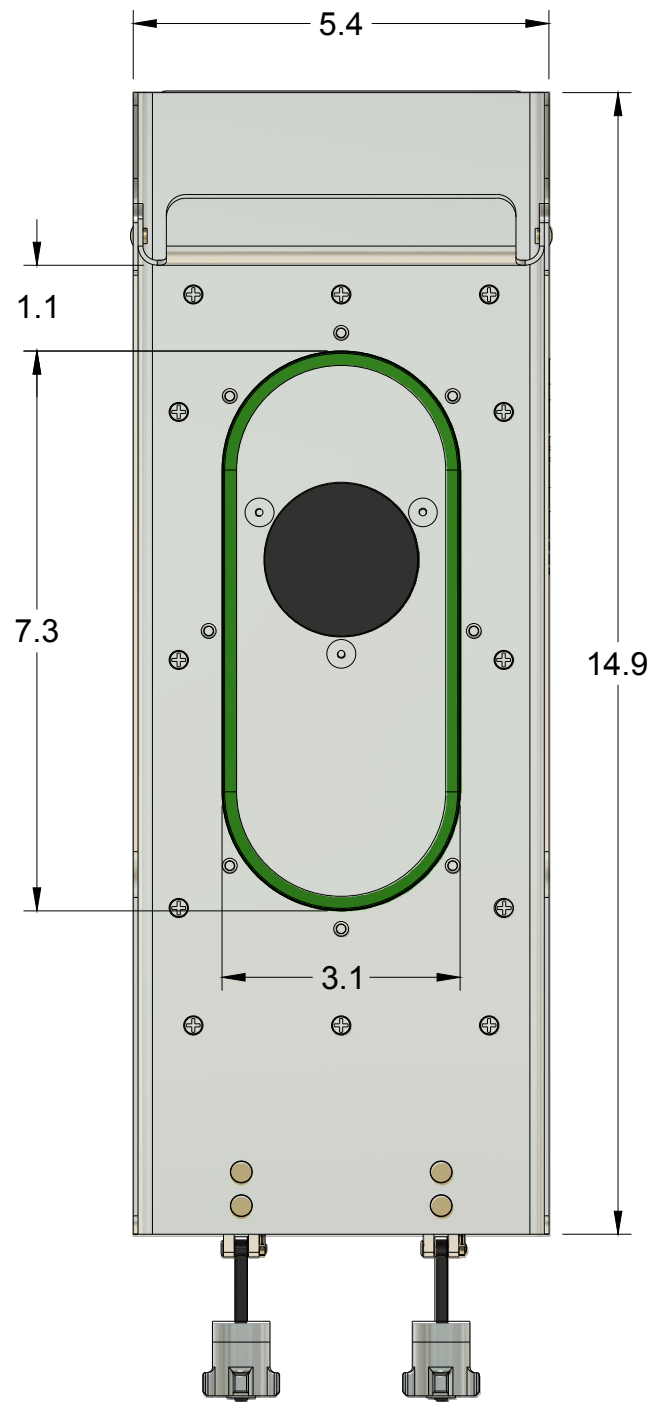
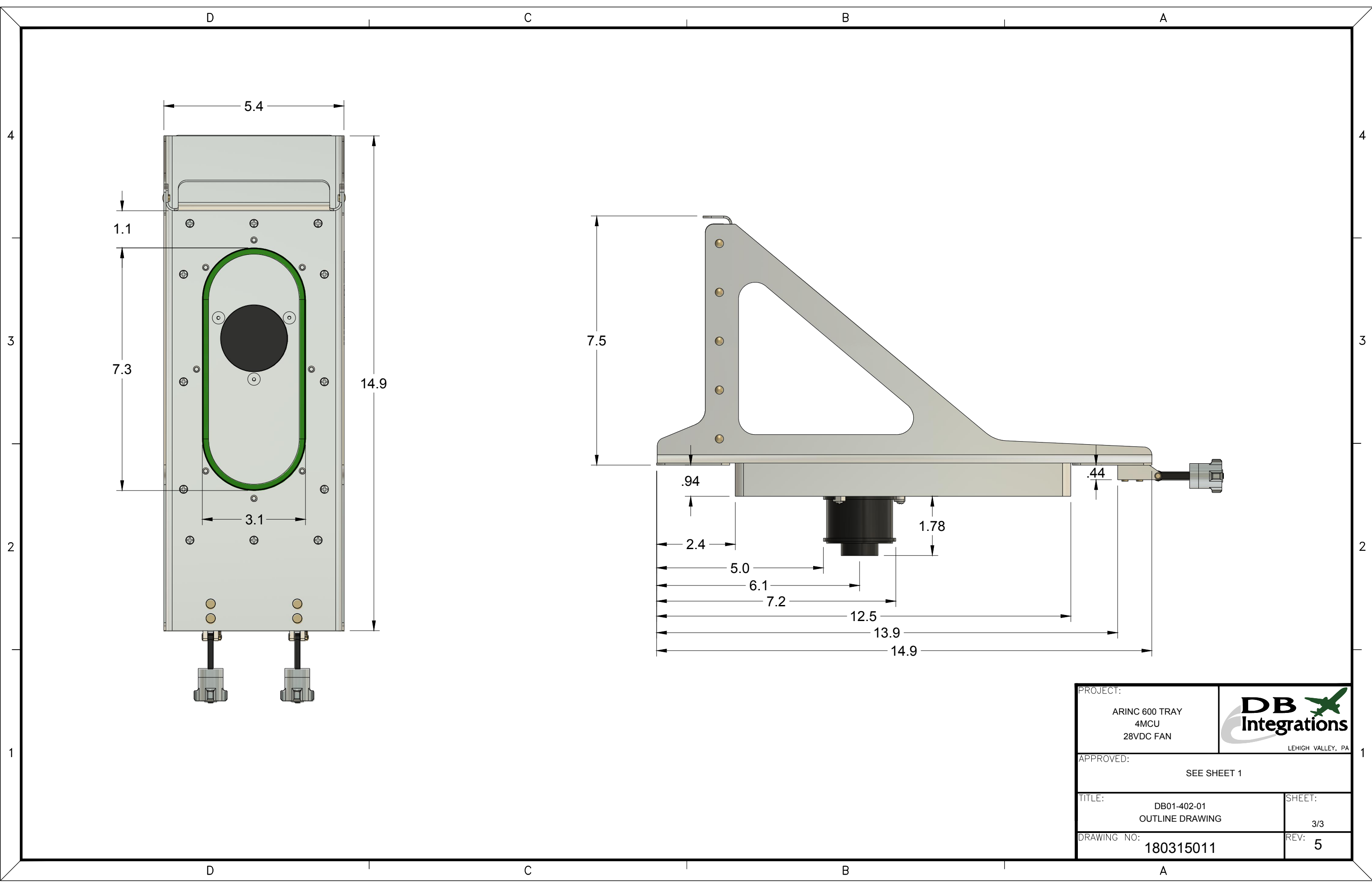
PROJECT:		 LEHIGH VALLEY, PA
ARINC 600 TRAY 4MCU 28VDC FAN		
APPROVED:		
 NOAH SCHULTZ		
TITLE:	DB01-402-01 OUTLINE DRAWING	SHEET: 1/3
DRAWING NO:	180315011	REV: 5




4MCU MOUNTING TRAY
 P/N: DB01-402-01
 LOT: XXXXX, HW: 1

CENTER OF GRAVITY

PROJECT: ARINC 600 TRAY 4MCU 28VDC FAN		 LEHIGH VALLEY, PA
APPROVED: SEE SHEET 1		
TITLE: DB01-402-01 OUTLINE DRAWING		SHEET: 2/3
DRAWING NO: 180315011		REV: 5



PROJECT:		 LEHIGH VALLEY, PA
ARING 600 TRAY 4MCU 28VDC FAN		
APPROVED:		
SEE SHEET 1		
TITLE:		SHEET:
DB01-402-01 OUTLINE DRAWING		3/3
DRAWING NO:		REV:
180315011		5