

DB01-201-01 SPECIFICATIONS

MATERIAL:

TRAY: 0.063" ALCLAD 2024-T3 MEETING AMS-QQ-A-250/5

FINISH:

CONVERSION COATING PER MIL-DTL-81706

DESIGN:

2MCU DIMENSIONS PER ARINC 600

MOUNTING HOLES NOT DRILLED

LOCKING LRU HOLD-DOWN PER M85731

WEIGHT: 0.9 POUNDS

ENVIRONMENTAL:

STATIC LOAD TESTED PER PART 25 AND 29 CATEGORIES, 5.0KG LRU

ACCELERATION TESTED PER DO-160, SECTION 7, CATEGORY B

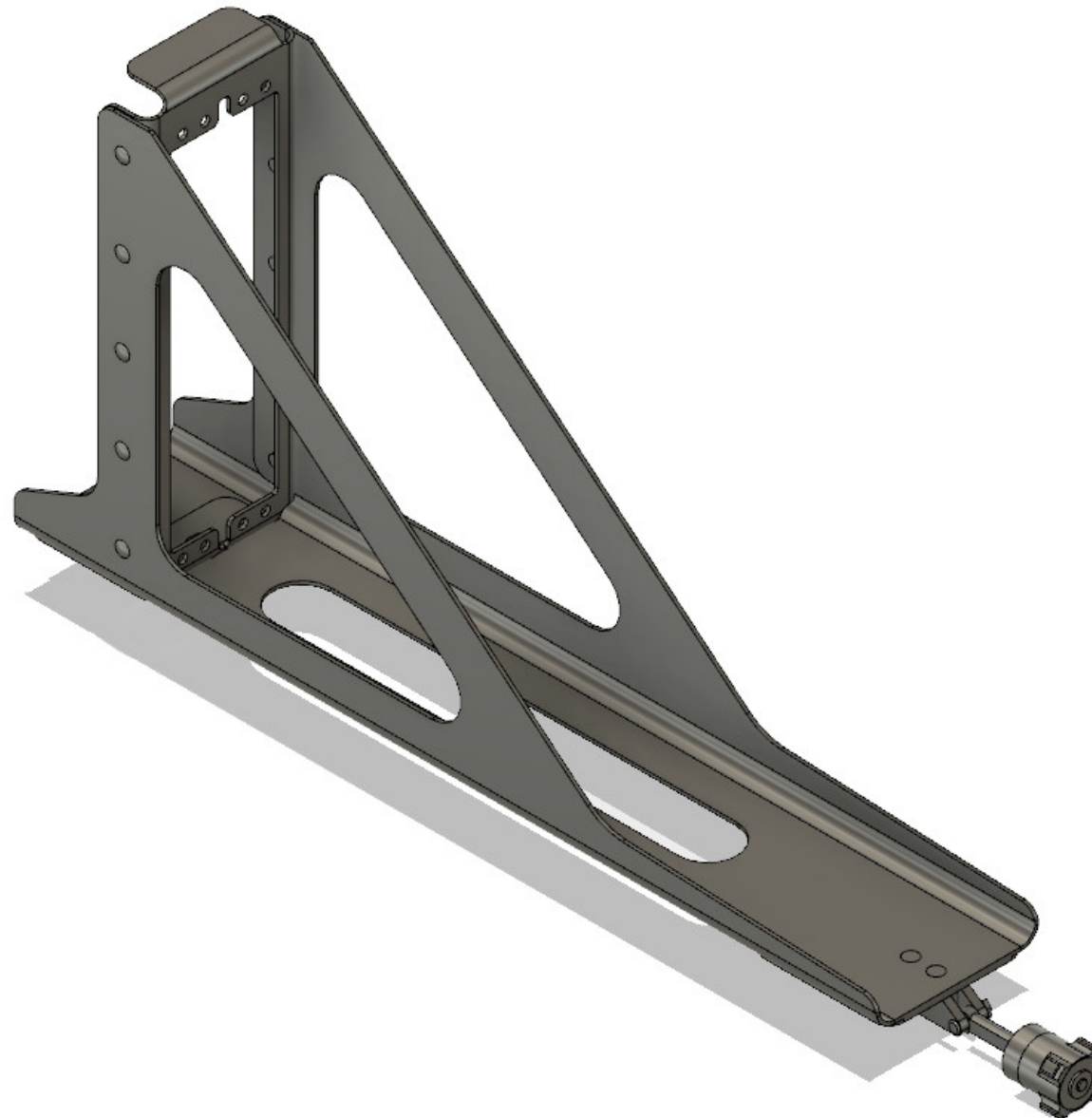
MECHANICAL SHOCK TESTED PER DO-160, SECTION 7, CATEGORY A

VIBRATION TESTED PER DO-160, SECTION 8, CATEGORY S, CURVE B3

VIBRATION TESTED PER DO-160, SECTION 8, CATEGORY U2, CURVES F AND F1



SUPPORT:

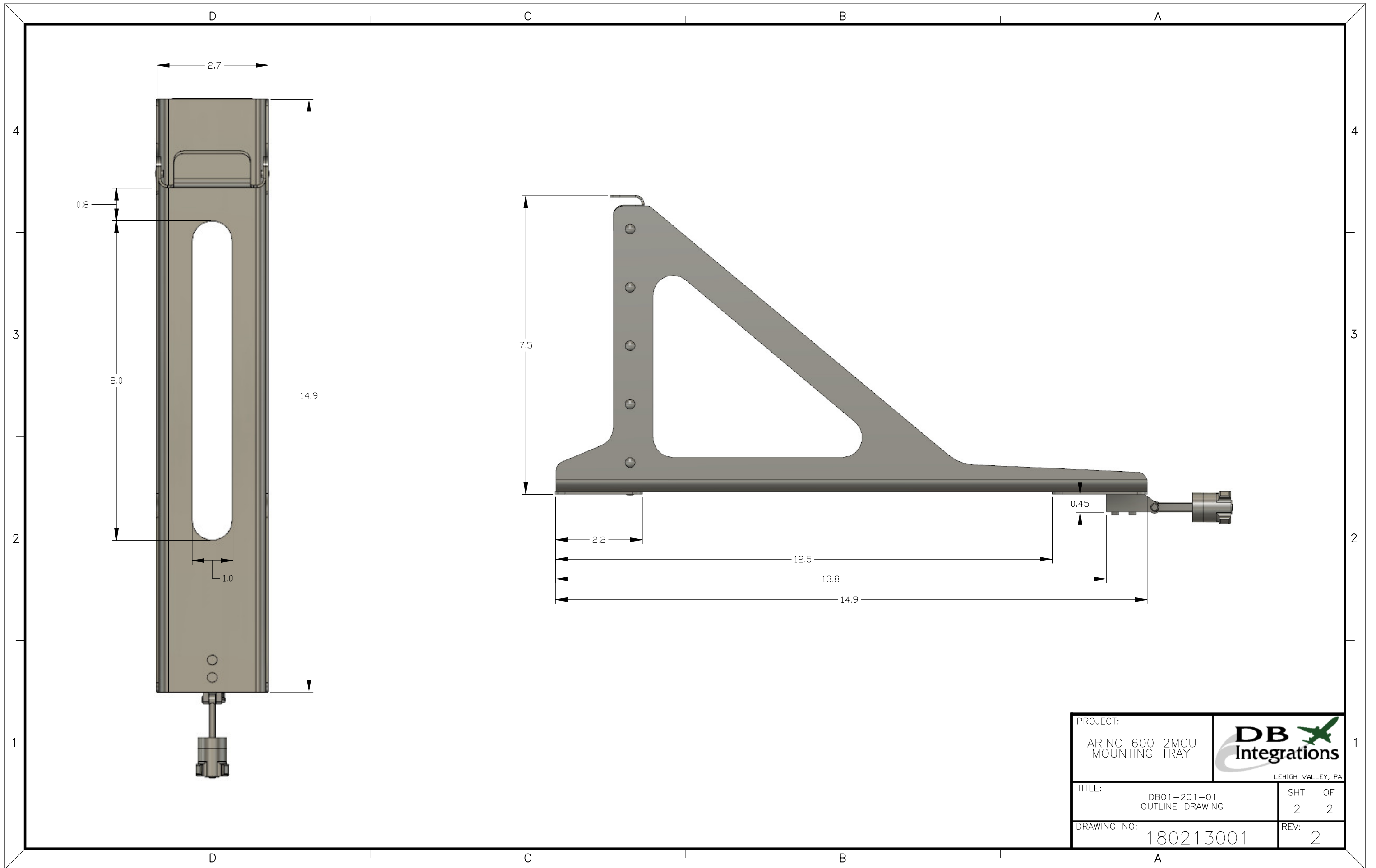
3D MODELING AVAILABLE




REV:	REVISION DESCRIPTION:	DATE:
0	INITIAL RELEASE, HARDWARE VERSION 0	1/22/18
1	ADDED ENVIRONMENTAL TESTING DATA, HARDWARE VERSION 1	5/1/18
2	REFORMATTED, HARDWARE VERSION 1	6/9/18

TOLERANCES: X = ±1.00
.X = ±0.100
.XX = ±0.030
.XXX = ±0.010
ANGLES = ±2.00°
FRACTION = ±1/32

PROJECT: ARINC 600 2MCU MOUNTING TRAY		 LEHIGH VALLEY, PA	
APPROVED:  BRET GILLIGAN			
TITLE: DB01-201-01 OUTLINE DRAWING		SHT	OF
		1	2
DRAWING NO: 180213001		REV:	2



PROJECT:		 LEHIGH VALLEY, PA	
ARINC 600 2MCU MOUNTING TRAY			
TITLE:	DB01-201-01 OUTLINE DRAWING	SHT	OF
		2	2
DRAWING NO:	180213001	REV:	2